

HM-PF-4×200A (400Hz)-Russia 规格书 (电源滤波器)

◆ **技术参数 Specification**

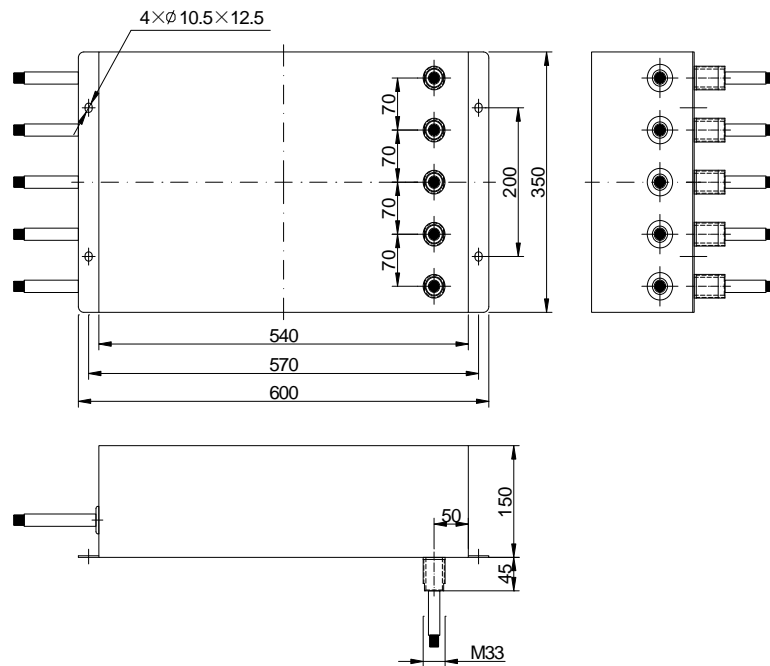
| | |
|--------------------------|------------|
| 额定电压 Rated voltage | 220/115VAC |
| 额定电流 Rated current | 200A |
| 泄漏电流 Leakage Current | <1A |
| 工作频率 Operating Frequency | DC-400Hz |
| 气候类别 Climatic category | 25/070/21 |

典型插入损耗 Typical insertion loss

| | |
|-----------|------------|
| 频率 | 150K-18GHz |
| 插入损耗 (dB) | ≥100dB |
| 共模、差模 | |

◆ **外形尺寸 Dimension**

Outline Drawing and Dimensions: (mm)



** L Line X3 N Line X1 Grounding Line X1

** Cable diameter: 70mm²

◆ **特点与应用 Features & Applications**

工作频带宽, 插入损耗高: Wide operating band, high insert loss

干扰抑制能力强: Strong ability for restrain interference

低压降, 中等漏电流: Low voltage drop, low leakage current

用于电磁屏蔽房、屏蔽柜、电子方舱、信息安全保密房、医院 CT、核磁共振房、可控硅变流设备、电源净化设备的电源端的滤波 Use for filter in electro-magnetic shielding room、shielding cabinet、electronic、square cabin、information security room、CT equipment of hospital、nuclear-magnetic、resonance room、SCR current converting equipment、power terminal of the equipment for power purification.